

PD SERIES



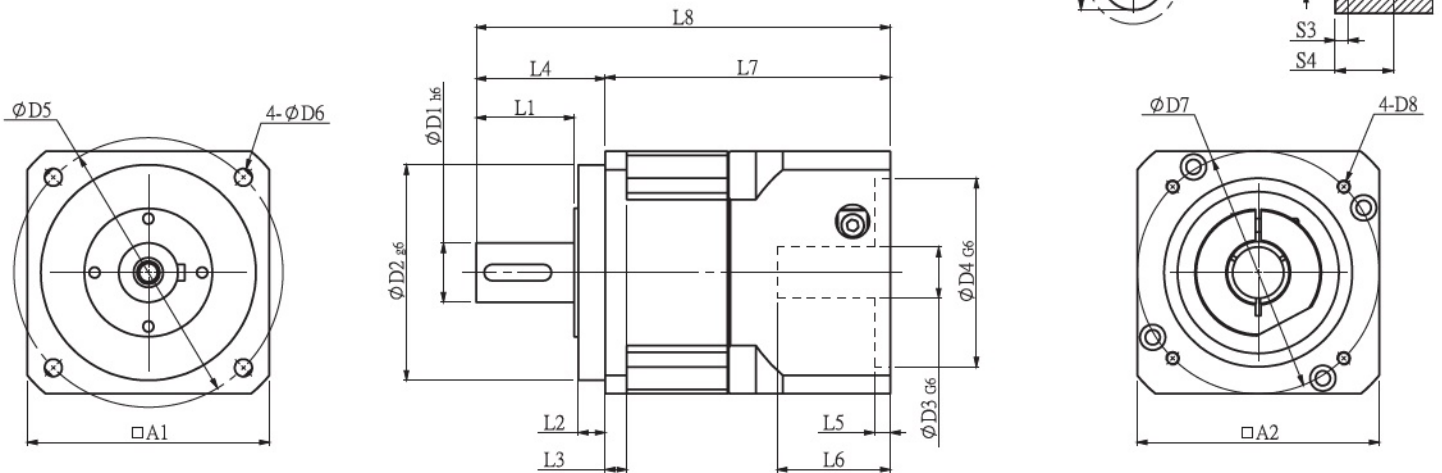
- Fully integrated design, maximum precision is maximized.
- Double-supported cage carrier structure with high reliability and adapt to frequent positive and negative reversal.
- Helical gear transmission, the transmission is more stable and the bearing is larger.
- Low return clearance, more accurate positioning.
- Special turret structure can carry greater radial and axial forces.

Dimension Size : 42-180

Geer Ratio Range : 3-100

Accuracy Range : 1-3arcmin (P1)

Accuracy Range : 3-5arcmin (P2)



Series		PD																										
Model		D1	D2	D3	D4	D5	D6	D7	D8	L1	L2	L3	L4	L5	L6	L7(L1)	L7(L2)	L8(L1)	L8(L2)	A1	A2	S1	S2	S3	S4	B	H	C
PD42		13	35	8	30	50	3.5	46	M4	19.5	5.5	4	26	3.5	28	60.3	86	87.3	113	42.6	42.6	2	16	4	12	5	15	M4
PD60		16	50	14	50	70	5.5	70	M4	29	7	8	37	4	34	82.5	117.5	119.5	154.5	60	60	3	20	5	15	5	18	M5
DP90		22	80	19	70	100	6.5	90	M5	39.5	10	8	48	6	42	106	148	154	196	90	90	3	25	4.5	20.5	6	24.5	M8
PD120		32	110	22	110	130	8.5	145	M8	49.5	10	10	63	7	58	133.5	186.5	196.5	249.5	120	120	5	40	6	25	10	35	M12
PD140		40	130	35	114.3	165	10.5	200	M12	84	10	25	97	10	81	179	244	276	341	140	176	5	65	10	36	12	43	M16

Parameter / Specification		PD42	PD60	PD90	PD120	PD140	
Rated Torque(Nm)	L1	3	19	50	130	208	
		4	19	53	140	290	
		5	17	54	140	290	
		6	/	/	135	280	
		7	14	44	125	270	
		8	/	/	110	240	
		9	11	37	95	220	
		10	11	37	95	220	
		L2	15	19	50	140	290
			20	19	53	140	290
	25		17	54	140	290	
	30		19	50	130	208	
	35		17	54	140	290	
	40		19	54	140	290	
	45		17	54	140	290	
	50		17	54	140	290	
	60		/	/	135	280	
	70		14	44	125	270	
	Weight(Kg)	L1	0.5	1.3	3.7	7.8	15
		L2	0.8	1.5	4.1	9	19.7